

Woolly Thoughts

THE WORLD OF
ILLUSION KNITTING
where nothing is quite what it seems



The Gift of Life

*An illusion knitting scarf or banner to promote awareness of the organ donation register
designed by*

Steve Plummer & Pat Ashforth

The Gift of Life

The Pattern

The photo on the cover shows a double-sided scarf, knitted in the round. The pattern also includes instructions for knitting the scarf as a single flat piece, or as a banner.

In ideal conditions the lettering should disappear completely when you look directly at the knitting. The message can be seen when you hold up the scarf, or lay it out flat, and view it from an angle. The message is discreet until you want to reveal it. One side says GIVE THE GIFT OF LIFE and appears to have light lettering on a dark background; the other says REGISTER AS AN ORGAN DONOR in dark lettering on a light background.

Yarn

- Approximately 400 metres (440 yards) DK of each colour.
- The original is black and silver. Any contrasting colours can be used. Colours with a less stark contrast are more likely to make the message disappear when the scarf is worn.
- Lightweight yarns are best.
- Half the amount would be needed for a single-sided scarf, or banner with one message, plus extra for the border.

Needles

Use smaller needles than you would normally use for your chosen yarn but do not knit so tightly that the scarf will not drape. Use double-pointed, or circular needles, for the circular version, and any type of needles for the flat version. I used 3.5 mm.

Size

Length 155 cm (62"); width 15 cm (6"), excluding edging. The width and length can be increased but this is not recommended as this is already a fairly heavy scarf.

Using GIVE THE GIFT OF LIFE on its own could make a shorter scarf. Miss off some of the plain stripes at the beginning and end. It would be about 120 cm (48")

Tension

5 stitches to the inch, measured on garter stitch. This tension is not essential but knitting tighter, or looser will change the overall size of the scarf.

Chart

- The instructions include small scale versions of the chart and larger versions to work from.
- The chart is for ridges (not rows!). A ridge consists of two rows. The first of the two rows is always knit regardless of whether you are using the circular method or the flat method. Ridges and stitches are marked, with red lines, in groups of ten so that you can keep your place on the chart. Use markers on your needle to correspond.
- There are three colours on the chart but you are only using two colours of yarn.
- You always work two rows (one ridge) of one colour followed by two rows (one ridge) of the other.
- The coloured-in squares will show as garter bumps (sticking up) on the right-side of your scarf; the white squares will show as stocking-stitch (receding).

Round or Flat?

When working in the round always knit one round then follow the chart for the second round. Follow the chart *from right to left*. Purl the coloured stitches and knit the white stitches using the colour of the round you are on. Drop the unused yarn at the start of the round. When you need to use it again, bring it from below, then over, the yarn you have just finished using. There will be very little obvious jog at the join so you do not need to do anything special.

When working flat, knit the first row of the ridge, turn and follow the chart. Follow the chart *from left to right*. Knit the coloured stitches and purl the white stitches. Carry the unused yarn up the side of the work.

The Gift of Life - Circular Method

Begin with a temporary cast on of 64 stitches. (See note about cast-on and cast-off.)

Ridge 1 (Dark): Round 1: Knit. Join into a circle.

Round 2: Following the chart from right to left, knit the white stitches and purl the dark stitches. The chart shows k32, p32.

Drop the dark yarn and join in the light.

Ridge 2 (Light): Round 1: Knit.

Round 2: Follow the chart. Knit the white stitches and purl the grey stitches. The chart shows p32, k32.

Drop the light yarn. Lift the dark yarn up and over the light. Tug slightly to ensure there are no loose stitches. (Bring the new yarn over the old at the start of every ridge. This should eliminate any noticeable jog at the colour change.)

Repeat these two rounds 3 more times.

Ridge 9 (Dark): Round 1: Knit.

Round 2: As Ridge 1.

Ridge 10 (Light) Round 1: Knit.

Round 2: Follow the chart. Knit the white stitches and purl the grey stitches. The chart shows p10, k5, p7, k2, p8, k32.

Ridge 11 (Dark): Round 1: Knit.

Round 2: Follow the chart. Knit the white stitches and purl the dark stitches. The chart shows k10, p5, k7, p2, k8, p32.

Ridge 12 (Light) Round 1: Knit.

Round 2: Follow the chart. Knit the white stitches and purl the grey stitches. The chart shows p8, k2, p5, k2, p3, k2, p10, k32.

Continue in this way until you reach the end of the chart. Cast off (See note below).

Note about cast-on and cast-off

If you begin with a temporary cast-on you will be able to finish both ends of the scarf in the same way.

At the cast-off end, put 32 stitches on each of two needles, hold the two needles together and cast off through both sets of stitches at the same time. At the cast-on end, remove the temporary cast-on then cast off in the same way.

Changing the width of the scarf

If you would like the scarf to be wider, add extra stitches to the width of the two halves.



The Gift of Life - Flat Method

Use one half of the chart if you want a single-sided scarf, using either set of 32 stitches depending on which message you want. Use the whole chart if you want a banner with both messages. The message on the right will be on the top of your banner.

These instructions are for the banner with both messages.

Begin with a temporary cast on of 64 stitches. (See note about cast-on and cast-off.)

Ridge 1 (Dark): Row 1: Knit
Row 2: Following the chart from left to right, knit the dark stitches and purl the white stitches. The chart shows k32, p32.

Ridge 2 (Light): Row 1: Knit.
Row 2: Follow the chart. Knit the grey stitches and purl the white stitches. The chart shows p32, k32.

Repeat these two ridges 3 more times.

Ridge 9 (Dark): Row 1: Knit.
Row 2: As Ridge 1.

Ridge 10 (Light) Row 1: Knit.
Row 2: Follow the chart. Knit the grey stitches and purl the white stitches. The chart shows p32, k8, p2, k7, p5, k10.

Ridge 11 (Dark): Row 1: Knit.
Row 2: Follow the chart. Knit the dark stitches and purl the white stitches. The chart shows k32, p8, k2, p7, k5, p10.

Ridge 12 (Light) Row 1: Knit.
Row 2: Follow the chart. Knit the grey stitches and purl the white stitches. The chart shows p32, k10, p2, k3, p2, k5, p2, k8.

Continue in this way until the scarf is the length you want. Cast off (See notes below.).

Note about cast-on and cast-off

If you begin with a temporary cast-on you will be able to finish both ends of the scarf in the same way.

Changing the width of the scarf

If you would like the scarf to be wider, add extra stitches at both sides of the lettering.

Finishing the scarf

The edges will probably not be tidy enough to be left as they are. You can finish with an I-cord edging all round, or a wider border.

Adding a border

Work on one edge at a time.

- On the long edges, pick up one stitch from the end of each ridge. Knit as many rows of garter stitch as you want, knitting into the front and back of the the first stitch of every row. Cast off loosely
- At the finishing end, continue on the existing stitches for the same number of rows as on the long edges, increasing in the first stitch of every row. Cast off loosely.
- At the beginning unravel the temporary cast-on and complete to match the other end.
- Stitch the mitred corners.

Adding a channel for a banner

Complete the two short edges, and the long bottom edge, in the same way as for a scarf.

On the top edge, pick up one stitch from the end of every ridge. Work in garter stitch, increasing in the first stitch of every row. Knit until the border is the same width as the other edges.

Next row: Knit two together, knit to the end. Repeat this row until the extra border matches the first part. Cast off loosely. Stitch the mitred corners. Fold the extra piece to the back and catch in place. Insert a pole through the channel.

Adding a facing for more permanent display

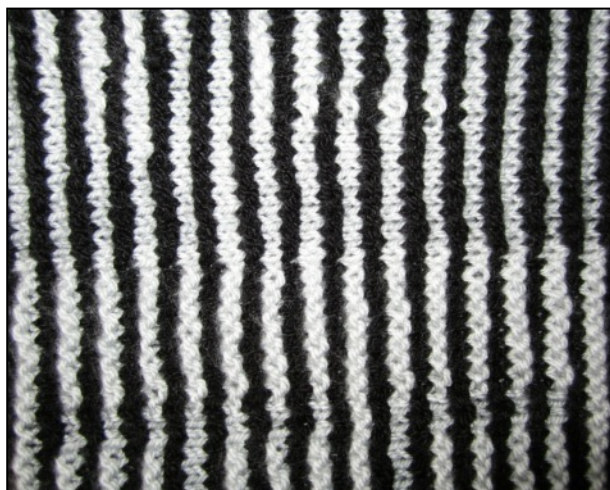
The banner can be displayed by stretching it over a thin board. It will need a facing on all four sides to keep it in place. Work all four edges the same.

Work as for border but do not cast off.

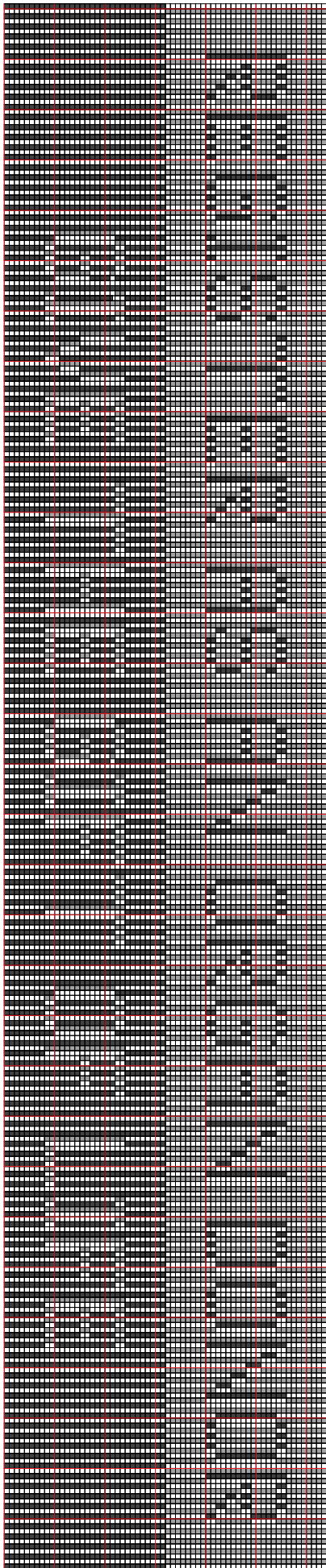
Next row: Knit two together, knit to the end. Repeat this row until you have the width you want. Cast off.

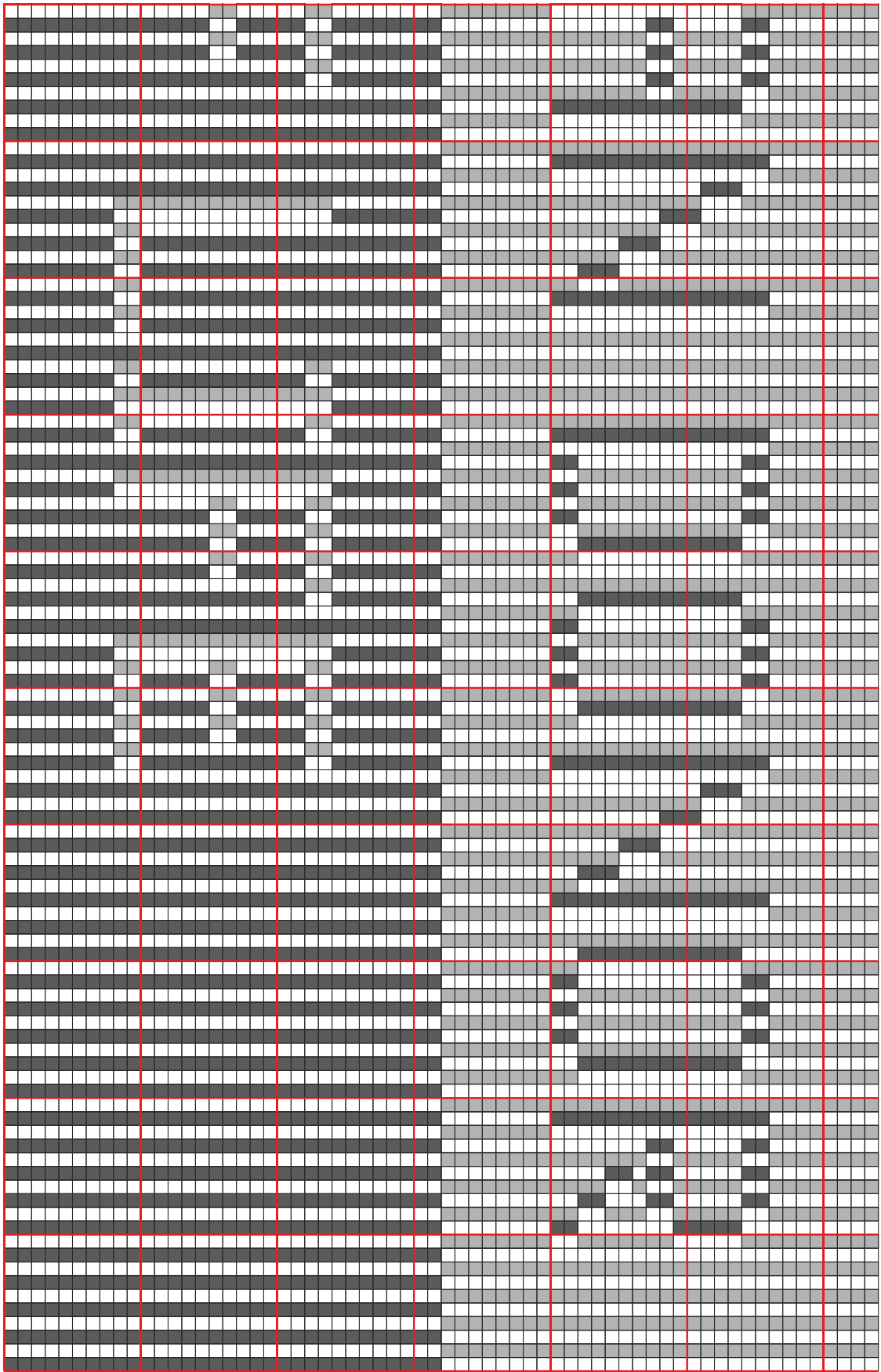
Fold the extra pieces to the inside and stitch all mitred corners. The banner can be held in place by Velcro attached to the back of the board, or by sticky tape if you never intend to remove it.

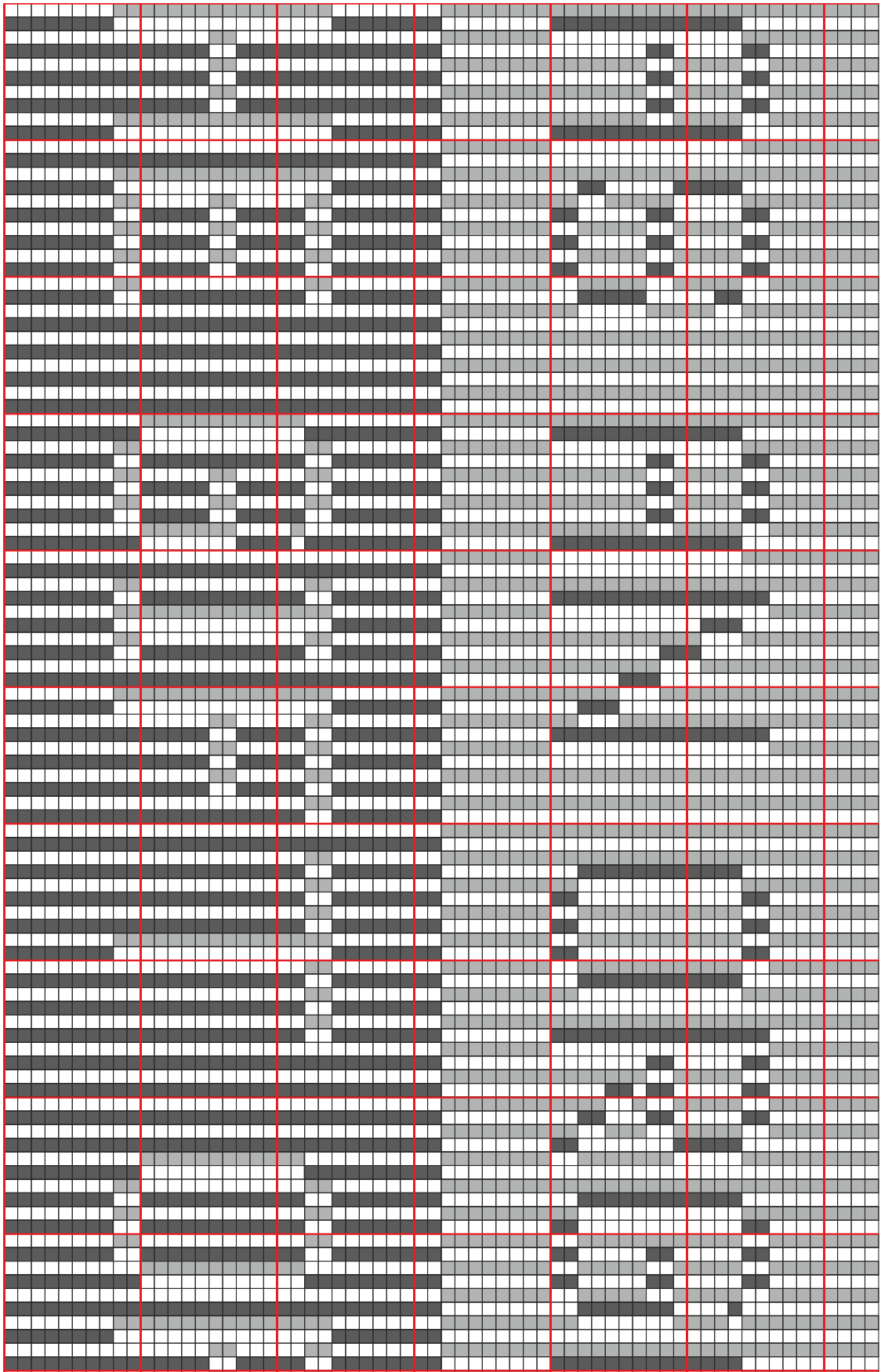
Most of the facing will never be seen so another option is to knit a very narrow border that will show on the front, cast off and continue in crochet. The crochet is much faster to work and can have spaces. It only needs to be firm enough to be gripped by the Velcro or tape.

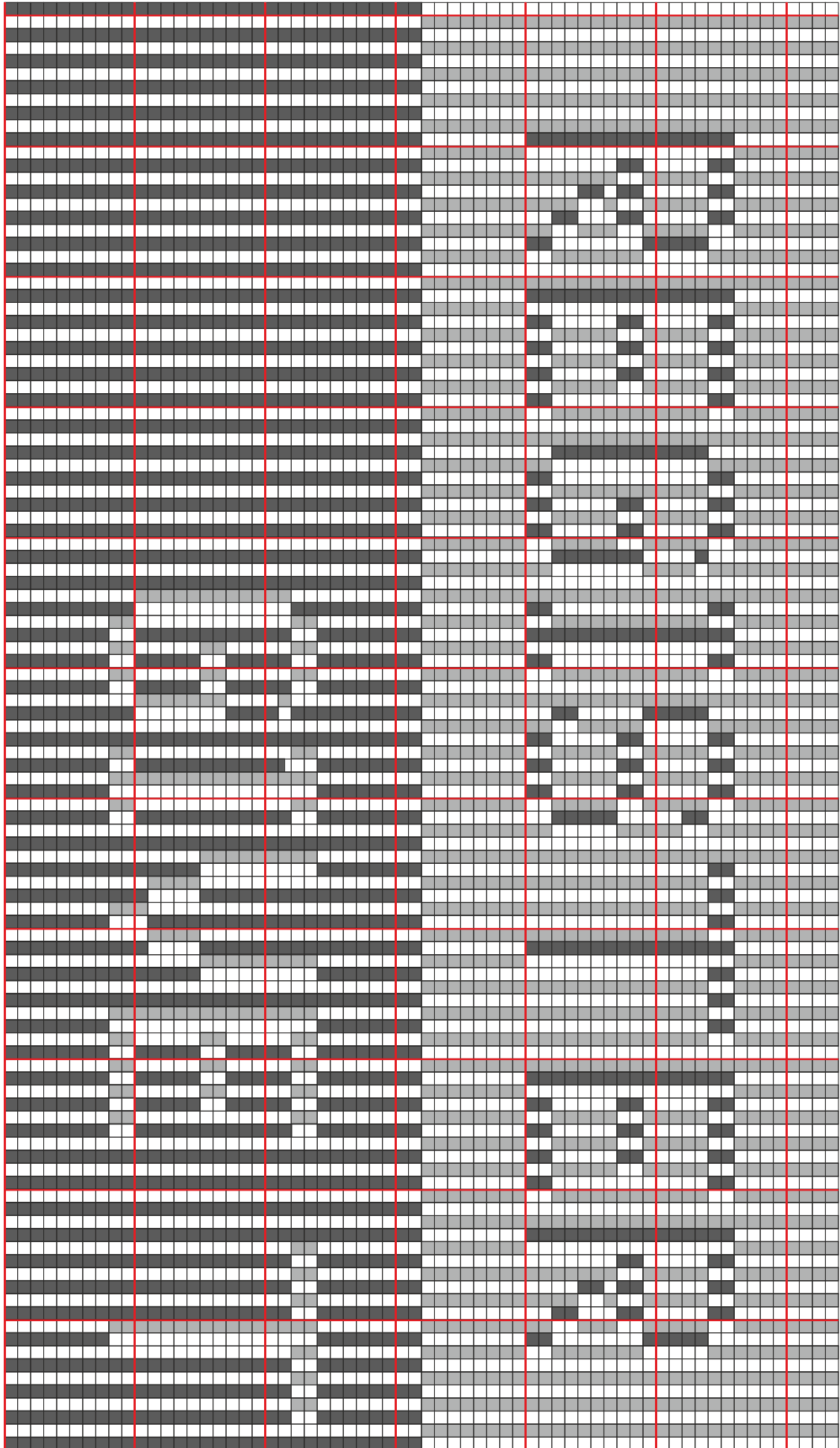


Close-ups of join









This pattern may be distributed freely to anyone who might use it to increase awareness of the organ donation register.

Please retain copyright information and web address with the pattern.



©Steve Plummer & Pat Ashforth 2013

Woolly Thoughts

166 Keighley Road, Colne, Lancashire, BB8 0PJ, England

woollythoughts.com

All rights reserved

